

Opening the door on suitable assisted accessible toilets... Away from Home

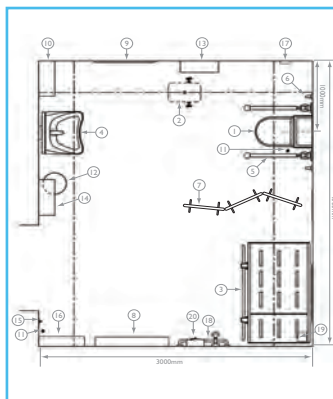
For tens of thousands of children and adults who need help to toilet, conventional wheelchair accessible toilets are not suitable.



Changing Places

A **Changing Places** toilet is 'desirable' in buildings to which numbers of the public have access. That includes tourist attractions, health facilities, educational buildings, leisure facilities, transport hubs, communal buildings.

- provided in addition to other accessible toilet facilities
- minimum 12m²
- includes as standard conventional wheelchair-accessible toilet equipment PLUS a tracking or mobile hoist, height-adjustable adult-sized changing bench, privacy screen, grab rails, paper roll, non-slip floor



Key/specification

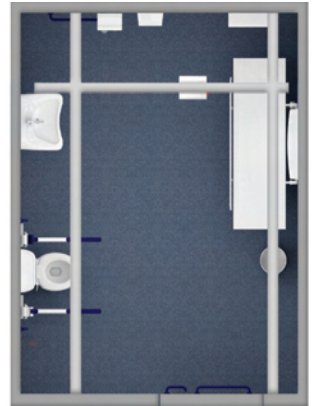
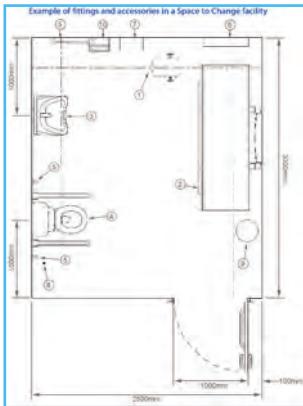
- 1 **WC (CP COM)**
Provide and install Via Shower Toilet. Allow for connection to 100mm waste and 15mm main water supply. Power supply to be unswitched. Ramp spur, installation to be determined by manufacturer's instructions, who to be commissioned by supplier.
Supplier: Total Hygiene Ltd.
- 2 **Ceiling hoist and track (CP XY 1)**
Provide and install 1500mm x 1500mm ceiling hoist with manual traverse and powered lifting. Provide 3 lamp switched fused spur for hoist at ceiling height.
Firing method to be determined by supplier/manufacturer.
Supplier: Total Hygiene Ltd.
- 3 **Height adjustable adult-sized changing bench (CP CB 3-7)**
Provide and install 1800mm x 500mm height adjustable changing table in safety rail. Allow for connection to flush-mounted. Ramp spur as per manufacturer's instructions.
Supplier: Total Hygiene Ltd.
- 4 **Wash basin (CP WBB 1-6)**
Provide and install height adjustable wash basin. Allow for connection to 15mm hot & cold water supplies, 20mm waste and flush-mounted 200gpc as per manufacturer's instructions.
Supplier: Total Hygiene Ltd.
- 5 **Drop down rail (CP DDR 1)**
- 6 **Vertical grab rail (CP GR 1)**
- 7 **Mobile privacy screen (CP WS 1)**
- 8 **Wide paper roll dispenser for use on the changing table (CP PD 1)**
- 9 **Full length mirror (CP M 1)**
- 10 **Paper towel dispenser**
- 11 **Alarm pull cord**
- 12 **Waste disposal bin**
- 13 **Large sanitary disposal bin**
- 14 **Manually operated hand-dryer**
- 15 **Two clothes hooks, at 1051mm and 1400mm above the floor**
- 16 **Sanitary towel dispenser**
- 17 **Alarm reset button**
- 18 **Horizontal grab rail**
- 19 **Floor drain**
- 20 **Shower**



Space to Change

Space to Change bridges the gap between conventional wheelchair-accessible toilets and a full Changing Places facility. It is an ideal solution for cafes, restaurants, supermarkets, sports facilities, and smaller outlets visited by the public: locations where space and/or cost is an issue.

- can be an enhancement to a conventional, existing wheelchair-accessible toilet
- minimum 7.5m²
- includes as standard conventional wheelchair-accessible toilet equipment PLUS a hoist and height-adjustable adult-sized changing bench



Key / Specification

- 1) Ceiling Hoist and track (CP XY II)**
Provide and install 2.5m x 3m powered and X-Y system with manual reverse and powered lifting/lowering. Provide 13amp switched fused spur for hoist re-calling height. Fixing method to be determined by supplier/manufacturer.
Supplier: Total Hygiene Ltd.
- 2) Height adjustable adult-sized changing bench (CP CB 3-8)**
Provide and install 1800mm x 700mm height adjustable changing table (w/ with safety rail Model Number R8403). Allow for connection to flush mounted 13amp spur as per manufacturer's instructions.
Supplier: Total Hygiene Ltd.
- 3) Wash Basin (CP WBB I-6)**
- 4) WC (CP WCLL 1)**
- 5) Vertical / Horizontal grab rail (CP GR 1)**
- 6) Wide paper roll dispenser for use on the changing bench (CP PD 1)**
- 7) Paper towel dispenser.**
- 8) Alarm pull cord.**
- 9) Waste disposal bin**
- 10) Manually operated hand-dryer.**